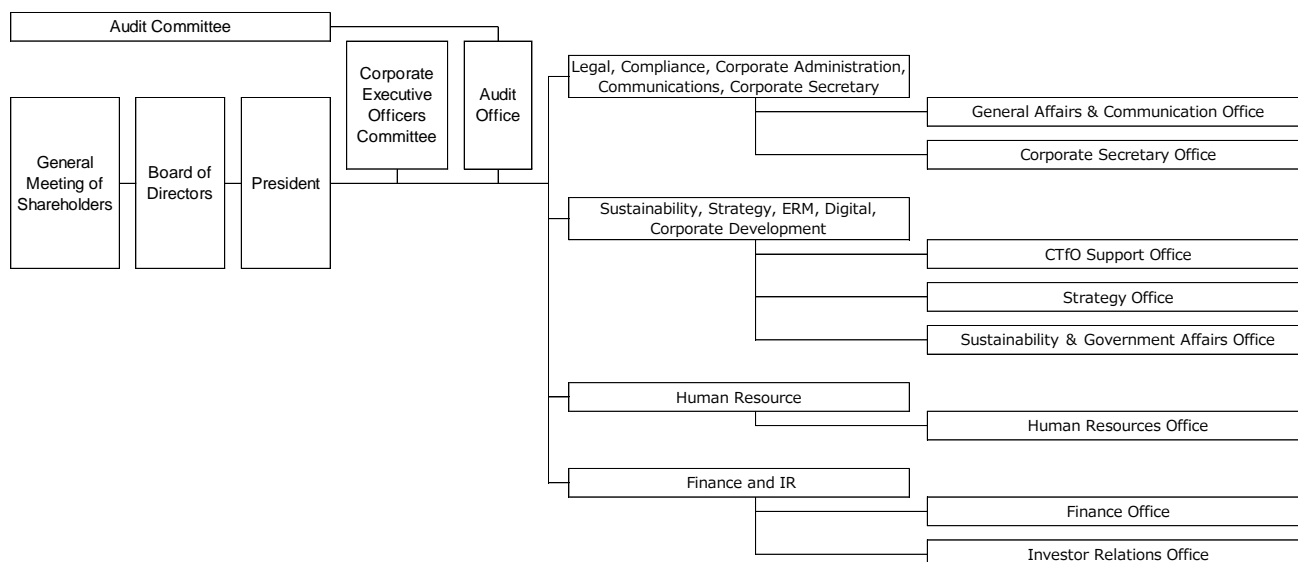


Announcement of Organizational Changes and Personnel Changes of the Mitsubishi Chemical Group

1. Management Structure Chart of Mitsubishi Chemical Group Corporation
(Effective as of April 1, 2025)



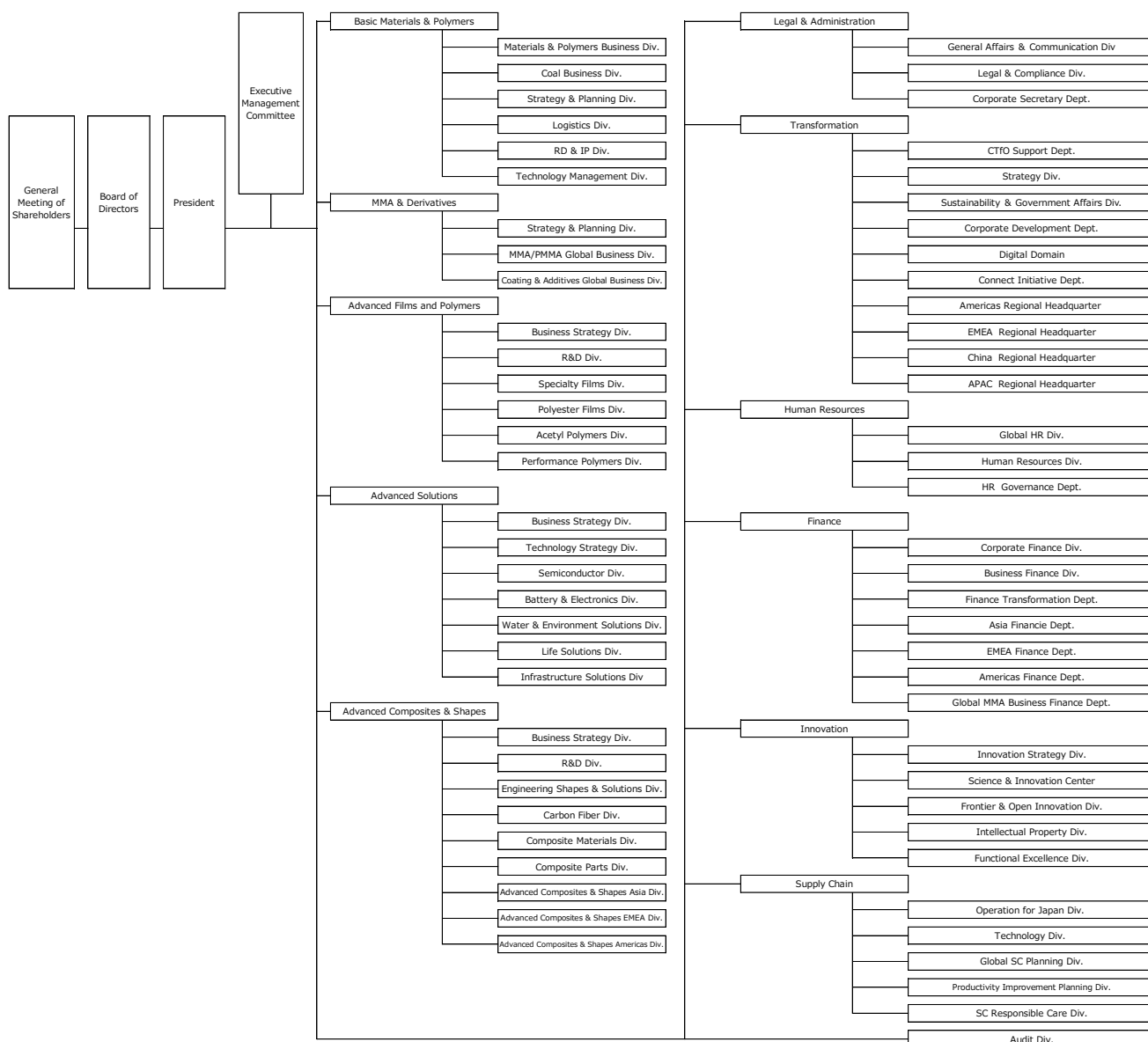
2. Corporate Executive Officers and Executive Officers of the Mitsubishi Chemical Group Corporation
(Effective as of April 1, 2025)

| New | Name |
|---|------------------|
| Representative Corporate Executive Officer, President and Chief Executive Officer | Manabu Chikumoto |
| Representative Corporate Executive Officer, Chief Compliance Officer, Supervising – Legal, Compliance, Corporate Administration, Communications, Corporate Secretary | Isao Yano |
| Corporate Executive Officer, Chief Transformation Officer, Supervising – Sustainability, Strategy, ERM, Digital, Corporate Development | Ken Araki |
| Executive Officer Chief Human Resource Officer | Masahiko Tanaka |
| Executive Officer, Chief Financial Officer Supervising – Finance and IR | Minoru Kida |
| Executive Officer, Chief Sustainability Officer | Noriyuki Mita |

3. Appointments of Directors of the Mitsubishi Chemical Group Corporation
(Effective as of April 1, 2025)

| New | Current | Name |
|--|---|------------------|
| Representative Corporate Executive Officer, Chief Compliance Officer, Supervising – Legal, Compliance, Corporate Administration, Communications, Corporate Secretary Director, General affairs & Communications Office | Senior Vice President, Chief Compliance Officer, Supervising – Internal Control and Risk Management, Audit | Isao Yano |
| Director, Corporate Secretary Office | Director, Corporate Secretary Dept. | Hidefumi Shigemi |
| Director, CTfO Support Office | (Joined the Mitsubishi Chemical Group on April 1, 2025) | Yuichiro Suzuki |
| Director, Strategy Office | Vice President, Chief Strategy Officer | Naoto Yabe |
| Executive Officer, Chief Sustainability Officer Director, Sustainability & Government Affairs Office | Vice President, Chief Sustainability Officer | Noriyuki Mita |
| Director, Human Resources Office. | Director, HR Strategy Dept. | Makoto Koide |
| Director, Finance Office | Director, Corporate Finance Div. | Yasushi Muto |
| Director, Investor Relations Office. | Director, Investor Relation Div. | Haruka Chihara |
| Director, Audit Office | Director, Audit Div. | Osamu Shimizu |

4. Management Structure Chart of Mitsubishi Chemical Corporation (Effective as of April 1, 2025)



* This shows the management structure of Mitsubishi Chemical Corporation and its group companies.

5. Directors of the Board of Mitsubishi Chemical Corporation (Effective as of April 1, 2025)

| New | Name |
|--------------------------------------|-------------------|
| Representative Director of the Board | Manabu Chikumoto |
| Representative Director of the Board | Yasuo Shimodaira |
| Director of the Board | Isao Yano |
| Director of the Board | Ken Araki |
| Director of the Board | Toshiya Katsuragi |

MITSUBISHI CHEMICAL GROUP CORPORATION

| | |
|-----------------------|--------------------|
| Director of the Board | Yoshio Akahane |
| Director of the Board | Nobuo Fukuda |
| Corporate Auditor | Masahiro Yoshizumi |
| Corporate Auditor | Mikio Kasubuchi |
| Corporate Auditor | Tetsuji Suzuki |

6. Executive Officers of Mitsubishi Chemical Corporation (Effective as of April 1, 2025)

| New | Name |
|--|-----------------------------|
| President and CEO | Manabu Chikumoto |
| Managing Executive Officer, Head of Basic Materials & Polymers | Yasuo Shimodaira |
| Managing Executive Officer, Head of MMA & Derivatives | Satoshi Kurokawa |
| Managing Executive Officer, Head of Advanced Films & Polymers | Yosuke Egawa |
| Managing Executive Officer, Chief Compliance Officer | Isao Yano |
| Managing Executive Officer, Chief Transformation Officer | Ken Araki |
| Managing Executive Officer, Chief Technology Officer | Toshiya Katsuragi |
| Executive Officer, Head of Advanced Solutions | Satoshi Wakabayashi |
| Executive Officer, Head of Advanced Composites & Shapes | Franck Ruel |
| Executive Officer, Chief Human Resource Officer | Masahiko Tanaka |
| Executive Officer, Chief Financial Officer | Minoru Kida |
| Executive Officer, Chief Supply Chain Officer | Yoshio Akahane |
| Executive Officer, Chief Strategy Officer | Naoto Yabe |
| Executive Officer, Chief Sustainability Officer | Noriyuki Mita |
| Executive Officer, Region Head of Americas President and CEO, Mitsubishi Chemical America, Inc. (Effective as of April 8, 2025) | Frank Randall (Randy) Queen |
| Executive Officer, Chief Legal Officer | Susumu Sakurai |

7. Appointments of Directors of Mitsubishi Chemical Corporation (Effective as of April 1, 2025)

| New | Name |
|---|-------------------|
| Director, Materials & Polymers Business Div., Basic Materials & Polymers Business Group | Junji Takano |
| Director, Coal Business Div., Basic Materials & Polymers Business Group | Kazunari Takeyama |

MITSUBISHI CHEMICAL GROUP CORPORATION

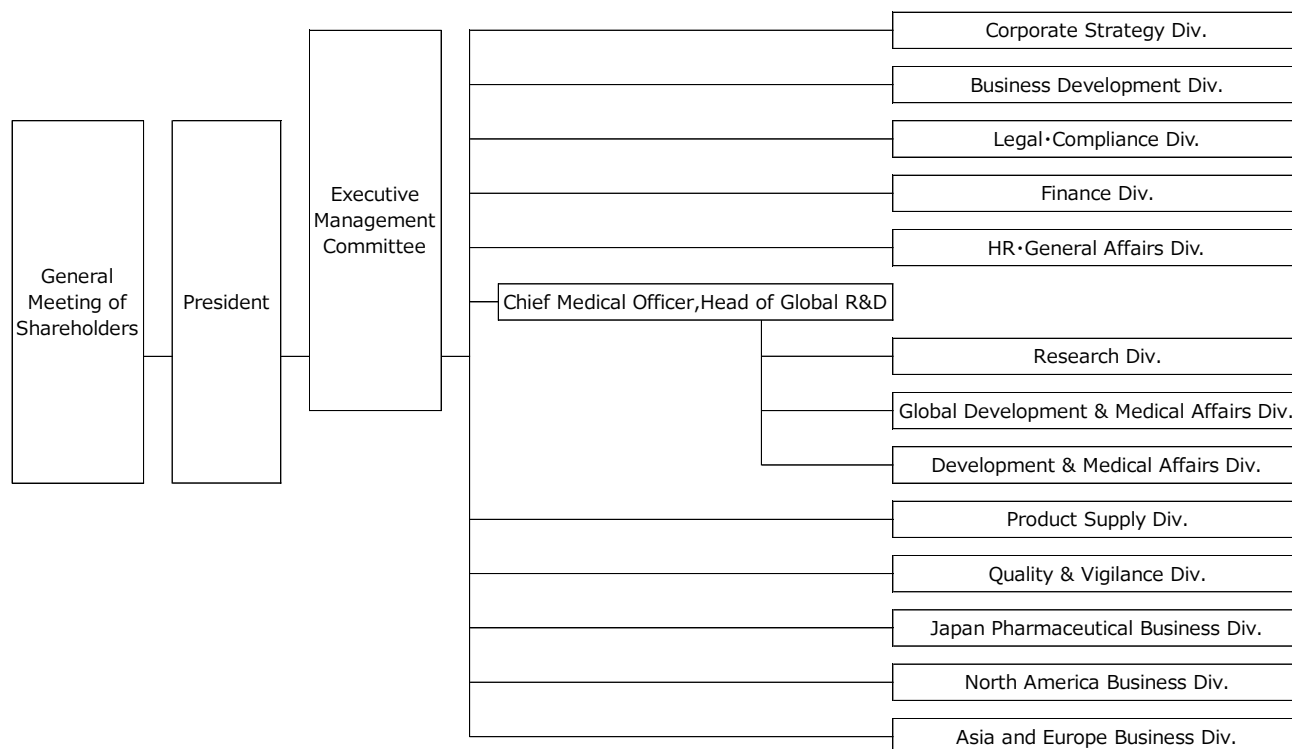
| | |
|--|--------------------------|
| Director, Strategy & Planning Div., Basic Materials & Polymers Business Group | Yoshitaka Arakawa |
| Director, Logistics Div., Basic Materials & Polymers Business Group | Tadashi Kusumoto |
| Director, RD & IP Div, Basic Materials & Polymers Business Group | Masaru Utsunomiya |
| Director, Technology Management Div, Basic Materials & Polymers Business Group | Kyota Hara |
| Director, Strategy & Planning Div., MMA & Derivatives Business Group | Yuji Mikami |
| Director, MMA/PMMA Global Business Div., MMA & Derivatives Business Group | Michio Kaharu |
| Director, Coating & Additives Global Business Div., MMA & Derivatives Business Group | Tomohiro Nishimura |
| Director, Business Strategy Div., Advanced Films & Polymers Business Group | Hiroki Matsuo |
| Director, R&D Div., Advanced Films & Polymers Business Group | Takeshi Sugie |
| Director, Specialty Films Div., Advanced Films & Polymers Business Group | Takashi Aoki |
| Director, Polyester Films Div., Advanced Films & Polymers Business Group | Theodore (Ted) Higgins |
| Director, Acetyl Polymers Div., Advanced Films & Polymers Business Group | Takuya Sugimoto |
| Director, Performance Polymers Div, Advanced Films & Polymers Business Group | Yoshihisa Yamane |
| Director, Business Strategy Div., Advanced Solutions Business Group | Hironori Seki |
| Director, Technology Strategy Div. Advanced Solutions Business Group | Teruyuki Mitsumori |
| Director, Semiconductor Div., Advanced Solutions Business Group | Shinichi Maeda |
| Director, Battery & Electronics Div., Advanced Solutions Business Group | Naoki Sako |
| Director, Water & Environment Solutions Div., Advanced Solutions Business Group | Ryuhei Saito |
| Director, Life Solutions Div., Advanced Solutions Business Group | Jonathan Goff |
| Director, Infrastructure Solutions Div. Advanced Solutions Business Group | Katsuya Serizawa |
| Director, Business Strategy Div., Advanced Composites & Shapes Asia Div., Advanced Composites & Shapes Business Group | Shindo Ebihara |
| Director, R&D Div., Advanced Composites & Shapes Business Group | Clinton (Clint) Newell |
| Director, Engineering Shapes & Solutions Div., Advanced Composites & Shapes Americas Div., Advanced Composites & Shapes Business Group | Bernhard (Bernie) Willms |
| Director, Carbon Fiber Div., Advanced Composites & Shapes Business Group | Hiroteru Okumura |
| Director, Composite Materials Div., Advanced Composites & Shapes Business Group | Ryuichiro Sugimoto |
| Director, Composite Parts Div., Advanced Composites & Shapes EMEA Div., Advanced Composites & Shapes Business Group | Fahrettin Dogan |

MITSUBISHI CHEMICAL GROUP CORPORATION

| | |
|---|----------------------|
| Managing Executive Officer, Chief Compliance Officer, Director, General Affairs & Communications Div. | Isao Yano |
| Executive Officer, Chief Legal Officer, Director, Legal & Compliance Div. | Susumu Sakurai |
| Director, Corporate Secretary Dept. | Hidefumi Shigemi |
| Managing Executive Officer, Chief Transformation Officer Head of Digital Domain. | Ken Araki |
| Director, CTfO Support Dept. | Yuichiro Suzuki |
| Executive Officer, Chief Strategy Officer Director, Strategy Div. | Naoto Yabe |
| Executive Officer, Chief Sustainability Officer Director, Sustainability & Government Affairs Div. | Noriyuki Mita |
| Director, Corporate Development Dept. | Yoshikazu Hayashi |
| Director, Connect Initiative Dept. | Tomoaki Murota |
| Region Head of EMEA | Malcolm Kidd |
| Region Head of China | Qiu Wenjun |
| Region Head of APAC | Shintaro Yajima |
| Director, Global HR Div. | Daichi Tanabe |
| Director, Human Resources Div. | Shinichiro Taniguchi |
| Director, HR Governance Dept. | Makoto Koide |
| Director, Corporate Finance Div., Asia Finance Dept. | Yasushi Muto |
| Director, Business Finance Div. | Takayoshi Kumikawa |
| Director, Finance Transformation Dept. | Shuji Nagai |
| Director, EMEA Finance Dept. | Kazunari Sasaki |
| Director, Americas Finance Dept. | Travis Bayne |
| Director, Global MMA Business Finance Dept. | Dai Oyama |
| Director, Innovation Strategy Div. | Hideaki Okamoto |
| Director, Science & Innovation Center | Juichi Fujimoto |

| | |
|---|--------------------|
| Director, Frontier & Open Innovation Div. | Fumiko Uraki |
| Director, Intellectual Property Div. | Masanori Yamamoto |
| Director, Functional Excellence Div. | Mitsufumi Nodono |
| Executive Officer, Chief Supply Chain Officer Director, Global SC Planning Div. | Yoshio Akahane |
| Senior Director, Supply Chain | Kazumitsu Sakurai |
| Director, Operation for Japan Div. | Narutoshi Hyoudou |
| Director, Technology Div. | Hirotoishi Mizota |
| Director, Productivity Improvement Planning Div. | Sadaki Yagi |
| Director, SC Responsible Care Div. | Yoshihiro Kurasawa |
| Director, Audit Div. | Osamu Shimizu |

8. Management Structure Chart of Mitsubishi Tanabe Pharma Corporation (Effective as of April 1, 2025)



9. Directors of the Board of Mitsubishi Tanabe Pharma Corporation (Effective as of April 1, 2025)

| New | Name |
|--------------------------------------|-------------------|
| Representative Director of the Board | Akihiro Tsujimura |
| Representative Director of the Board | Hiroaki Ueno |
| Director of the Board | Ryosuke Tanabe |
| Director of the Board | Isao Yano |
| Director of the Board | Ken Araki |
| Corporate Auditor | Toshihide Doi |
| Corporate Auditor | Satomi Takada |

10. Executive Officers of Mitsubishi Tanabe Pharma Corporation (Effective as of April 1, 2025)

| New | Name |
|--|-------------------|
| President and CEO Director, Business Development Div., Finance Div. | Akihiro Tsujimura |
| Chief Medical Officer, Head of Global R&D Director, Global Development & Medical Affairs Div. | Bijan Nejadnik |
| Director, Corporate Strategy Div. | Tetsurou Iwata |
| Director, Legal ・ Compliance Div. | Michihisa Yatou |

MITSUBISHI CHEMICAL GROUP CORPORATION

| | |
|--|--------------------|
| Director, HR • General Affairs Div. | Tomoaki Tokuno |
| Director, Research Div. | Naoya Masutomi |
| Director, Development & Medical Affairs Div. | Yousuke Kimura |
| Director, Product Supply Div. | Kenji Taguchi |
| Director, Quality & Vigilance Div. | Masanobu Kono |
| Director, Japan Pharmaceutical Business Div. | Yasutaka Kuragaki |
| Director, North America Business Div. | Yasutoshi Kawakami |
| Director, Asia and Europe Business Div. | Toshifumi Tada |

Contact:
 Mitsubishi Chemical Group Corporation
 Communications Division
 Media Relations Department : +81-3-6748-7140
[Contact form](#)